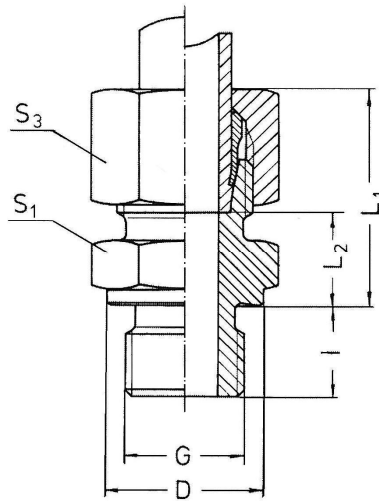


GERADE EINSCHRAUBVERSCHRAUBUNGEN

Einschraubgewinde G
metrisches Gewinde, kegelig
Whitworth-Rohrgewinde, kegelig
Einschraubzapfen Form C DIN 3852

Art.Nr.	Rohr AD	G	Artikelbeschreibung		L ₁	L ₂	S ₁	S ₃	i	PN
50206	4	M8x1K	GE 04 LLM8x1 keg	AKLL 04 M8x1	26	16	10	10	8	100
50207	5	M8x1K	GE 05 LLM8x1 keg	AKLL 05 M8x1	26	14,5	11	12	8	
52705	6	M10x1K	GE 06 LLM10x1 keg	AKLL 06 M10x1	26	14,5	11	12	8	
50209	8	M10x1K	GE 08 LLM10x1 keg	AKLL 08 M10x1	28	16,5	12	14	8	
52708	10	M14x1,5K	GE 10 LM14x1,5 keg	AKL 10 M14x1,5	32	20,5	17	17	12	
52709	12	M16x1,5K	GE 12 LM16x1,5 keg	AKL 12 M16x1,5	32	20	17	19	12	
50212	4	R1/8K	GE 04 LL R 1/8 keg	AKLL 04 R1/8"	26	16	11	10	8	
50213	5	R1/8K	GE 05 LL R 1/8 keg	AKLL 05 R1/8"	26	14,5	11	12	8	
50214	6	R1/8K	GE 06 LL R 1/8 keg	AKLL 06 R1/8"	26	14,5	11	12	8	
50215	8	R1/8K	GE 08 LL R 1/8 keg	AKLL 08 R1/8"	28	16,5	12	14	8	
50216	10	R1/4K	GE 10 LL R 1/4 keg	AKLL 10 R1/4"	32	20,5	14	17	12	
50217	12	R1/4K	GE 12 LL R 1/4 keg	AKLL 12 R1/4"	32	20	17	19	12	
50218	6	R1/8K	GE 06 LR 1/8 keg	AKL 06 R1/8"	31	16	14	14	8	315
50219	8	R1/8K	GE 08 LR 1/8 keg	AKL 08 R1/8"	31	16	14	17	8	
50220	8	R1/4K	GE 08 LR 1/4 keg	AKL 08 R1/4"	35	20	17	17	12	
50221	8	R3/8K	GE 08 LR 3/8 keg	AKL 08 R3/8"	36	21	19	17	12	
50222	8	R1/2K	GE 08 LR 1/2 keg	AKL 08 R1/2"	38	23	22	17	14	
50223	10	R1/4K	GE 10 LR 1/4 keg	AKL 10 R1/4"	36	21	17	19	12	
50224	10	R3/8K	GE 10 LR 3/8 keg	AKL 10 R3/8"	37	22	19	19	12	
50225	10	R1/2K	GE 10 LR 1/2 keg	AKL 10 R1/2"	39	24	22	19	14	
50226	12	R1/4K	GE 12 LR 1/4 keg	AKL 12 R1/4"	36	21	19	22	12	
50227	12	R3/8K	GE 12 LR 3/8 keg	AKL 12 R3/8"	37	22	19	22	12	
50228	12	R1/2K	GE 12 LR 1/2 keg	AKL 12 R1/2"	39	24	22	22	14	
50229	15	R1/2K	GE 15 LR 1/2 keg	AKL 15 R1/2"	39	24	24	27	14	
50230	18	R1/2K	GE 18 LR 1/2 keg	AKL 18 R1/2"	43	26,5	27	32	14	160
50231	22	R3/4K	GE 22 LR 3/4 keg	AKL 22 R3/4"	45	28,5	32	36	16	

Die tatsächlichen Längenmaße können variieren.

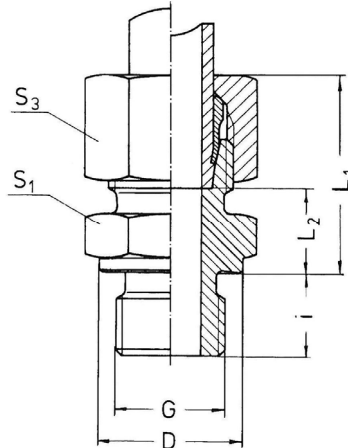


GERADE EINSCHRAUBVERSCHRAUBUNGEN

Einschraubgewinde G
metrisches Gewinde, zylindrisch
Einschraubzapfen Form B DIN 3852

Art.Nr.	Rohr AD	G	Artikelbeschreibung		L ₁	L ₂	i	S ₁	S ₃	D	PN
50232	6	M10x1	GE 06 PLM 10x1	AL 06 M 10x1	23	8,5	8	14	14	14	315
50233	8	M12x1,5	GE 08 PLM 12x1,5	AL 08 M 12x1,5	25	10	12	17	17	17	
50234	10	M14x1,5	GE 10 PLM 14x1,5	AL 10 M 14x1,5	24	11	12	19	19	19	
50235	12	M16x1,5	GE 12 PLM 16x1,5	AL 12 M 16x1,5	27	12,5	12	22	22	21	
50236	15	M18x1,5	GE 15 PLM 18x1,5	AL 15 M 18x1,5	29	13,5	12	24	27	23	
50237	18	M22x1,5	GE 18 PLM 22x1,5	AL 18 M 22x1,5	31	14,5	14	27	32	27	250
50238	22	M26x1,5	GE 22 PLM 26x1,5	AL 22 M 26x1,5	33	16,5	16	32	36	31	
50239	28	M33x2	GE 28 PLM 33x2	AL 28 M 33x2	34	17,5	18	41	41	39	
50240	35	M42x2	GE 35 PLM 42x2	AL 35 M 42x2	39	17,5	20	50	50	49	
50241	42	M48x2	GE 42 PLM 48x2	AL 42 M 48x2	42	19	22	55	60	55	
50242	6	M12x1,5	GE 06 PSM 12x1,5	AS 06 M 12x1,5	28	13	12	17	17	17	630
50243	8	M14x1,5	GE 08 PSM 14x1,5	AS 08 M 14x1,5	30	15	12	19	19	19	
50244	10	M16x1,5	GE 10 PSM 16x1,5	AS 10 M 16x1,5	31	15	12	22	22	21	
50245	12	M18x1,5	GE 12 PSM 18x1,5	AS 12 M 18x1,5	33	17	12	24	24	23	
50246	14	M20x1,5	GE 14 PSM 20x1,5	AS 14 M 20x1,5	37	19	14	27	27	25	
50247	16	M22x1,5	GE 16 PSM 22x1,5	AS 16 M 22x1,5	37	18,5	14	27	30	27	400
50248	20	M27x2	GE 20 PSM 27x2	AS 20 M 27x2	42	20,5	16	32	36	32	
50249	25	M33x2	GE 25 PSM 33x2	AS 25 M 33x2	47	23	18	41	46	39	
50250	30	M42x2	GE 30 PSM 42x2	AS 30 M 42x2	50	23,5	20	50	50	49	250
50251	38	M48x2	GE 38 PSM 48x2	AS 38 M 48x2	57	26	22	55	60	55	

Die tatsächlichen Längenmaße können variieren.

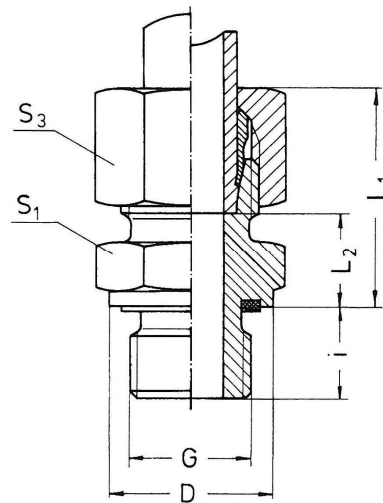


GERADE EINSCHRAUBVERSCHRAUBUNGEN

Einschraubgewinde G
Whitworth-Rohrgewinde, zylindrisch
Einschraubzapfen Form B DIN 3852

Art.Nr.	Rohr AD	G	Artikelbeschreibung		L ₁	L ₂	i	S ₁	S ₃	D	PN
50252	6	G1/8A	GE 06 PLR 1/8	AL 06 R1/8"	23	8,5	8	14	14	14	315
50253	6	G1/4A	GE 06 PLR 1/4	AL 06 R1/4"	25	10	12	19	14	18	
50254	6	G3/8A	GE 06 PLR 3/8	AL 06 R3/8"	26	11,5	12	22	14	22	
50255	8	G1/4A	GE 08 PLR 1/4	AL 08 R1/4"	25	10	12	19	17	18	
50256	8	G3/8A	GE 08 PLR 3/8	AL 08 R3/8"	26	11,5	12	22	17	22	
50257	8	G1/2A	GE 08 PLR 1/2	AL 08 R1/2"	28	13	14	27	17	26	
50258	10	G1/4A	GE 10 PLR 1/4	AL 10 R1/4"	26	11	12	19	19	18	
50259	10	G3/8A	GE 10 PLR 3/8	AL 10 R3/8"	27	12,5	12	22	19	22	
50260	10	G1/2A	GE 10 PLR 1/2	AL 10 R1/2"	28	13	14	27	19	26	
50261	12	G1/4A	GE 12 PLR 1/4	AL 12 R1/4"	26	11	12	19	22	18	
50262	12	G3/8A	GE 12 PLR 3/8	AL 12 R3/8"	27	12,5	12	22	22	22	
50263	12	G1/2A	GE 12 PLR 1/2	AL 12 R1/2"	28	13	14	27	22	26	
50264	15	G3/8A	GE 15 PLR 3/8	AL 15 R3/8"	29	13,5	12	22	27	22	
50265	15	G1/2A	GE 15 PLR 1/2	AL 15 R1/2"	29	14	14	27	27	26	
50266	18	G1/2A	GE 18 PLR 1/2	AL 18 R1/2"	31	14,5	14	27	32	26	
50267	18	G3/4A	GE 18 PLR 3/4	AL 18 R3/4"	31	14,5	16	32	32	32	
50268	22	G3/4A	GE 22 PLR 3/4	AL 22 R 3/4"	33	16,5	16	32	36	32	
50269	28	G1A	GE 28 PLR 1	AL 28 R 1"	34	17,5	18	41	41	39	
50270	35	G1 1/4A	GE 35 PLR 1 1/4	AL 35 R 1 1/4"	39	17,5	20	50	50	49	
50271	42	G1 1/2A	GE 42 PLR 1 1/2	AL 42 R 1 1/2"	42	19	22	55	60	55	
50272	6	G1/4A	GE 06 PSR 1/4	AS 06 R 1/4"	28	13	12	19	17	18	
50273	8	G1/4A	GE 08 PSR 1/4	AS 08 R 1/4"	30	15	12	19	19	18	
50274	10	G3/8A	GE 10 PSR 3/8	AS 10 R 3/8"	31	15	12	22	22	22	
50275	12	G3/8A	GE 12 PSR 3/8	AS 12 R 3/8"	33	17	12	22	24	22	
50276	12	G1/2A	GE 12 PSR 1/2	AS 12 R 1/2"	34	17,5	14	27	24	26	
50277	14	G1/2A	GE 14 PSR 1/2	AS 14 R 1/2"	37	19	14	27	27	26	
50278	16	G1/2A	GE 16 PSR 1/2	AS 16 R 1/2"	37	18,5	14	27	30	26	
50279	16	G3/4A	GE 16 PSR 3/4	AS 16 R 3/4"	39	20,5	16	32	30	32	
50280	20	G3/4A	GE 20 PSR 3/4	AS 20 R 3/4"	42	20,5	16	32	36	32	
50281	25	G1A	GE 25 PSR 1	AS 25 R 1"	47	23	18	41	46	39	
50282	30	G1 1/4A	GE 30 PSR 1 1/4	AS 30 R 1 1/4"	50	23,5	20	50	50	49	
50283	38	G1 1/2A	GE 38 PSR 1 1/2	AS 38 R 1 1/2"	57	26	22	55	60	55	

Die tatsächlichen Längenmaße können variieren.

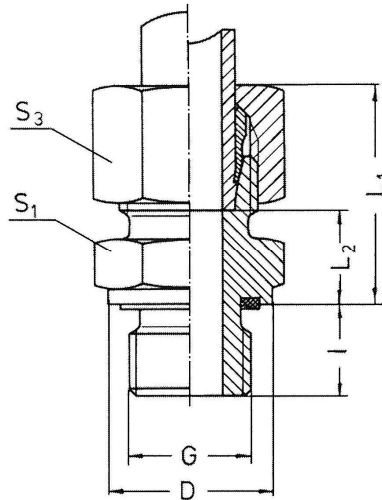


GERADE EINSCHRAUBVERSCHRAUBUNGEN

Einschraubgewinde G
metrisches Gewinde, zylindrisch
Einschraubzapfen mit Weichdichtung

Art.Nr.	Rohr AD	G	Artikelbeschreibung		L ₁	L ₂	i	S ₁	S ₃	D	PN
50284	6	M10X1	GE 06 PLM 10x1 ED	AL 06 M 10x1 WD	23	8,5	8	14	14	14	400
50285	8	M12X1,5	GE 08 PLM 12x1,5 ED	AL 08 M 12x1,5 WD	25	10	12	17	17	17	
50286	10	M14X1,5	GE 10 PLM 14x1,5 ED	AL 10 M 14x1,5 WD	26	11	12	19	19	19	
52668	12	M16X1,5	GE 12 PLM 16x1,5 ED	AL 12 M 16x1,5 WD	27	12,5	12	22	22	21,9	
52669	15	M18X1,5	GE 15 PLM 18x1,5 ED	AL 15 M 18x1,5 WD	29	13,5	12	24	27	23,9	
52670	18	M22X1,5	GE 18 PLM 22x1,5 ED	AL 18 M 22x1,5 WD	31	14,5	14	27	32	27	315
50290	22	M26X1,5	GE 22 PLM 26x1,5 ED	AL 22 M 26x1,5 WD	33	16,5	16	32	36	31,9	250
50291	28	M33X2	GE 28 PLM 33x2 ED	AL 28 M 33x2 WD	34	17,5	18	41	41	39,9	
50292	35	M42X2	GE 35 PLM 42x2 ED	AL 35 M 42x2 WD	39	17,5	20	50	50	49,9	
50293	42	M48X2	GE 42 PLM 48x2 ED	AL 42 M 48x2 WD	42	19	22	55	60	55	630
50294	6	M12X1,5	GE 06 PSM 12x1,5 ED	AS 06 M 12x1,5 WD	28	13	12	17	17	17	
52672	8	M14X1,5	GE 08 PSM 14x1,5 ED	AS 08 M 14x1,5 WD	30	15	12	19	19	19	
50296	10	M16X1,5	GE 10 PSM 16x1,5 ED	AS 10 M 16x1,5 WD	31	15	12	22	22	21,9	
52674	12	M18X1,5	GE 12 PSM 18x1,5 ED	AS 12 M 18x1,5 WD	33	17	12	24	24	23,9	
50298	14	M20X1,5	GE 14 PSM 20x1,5 ED	AS 14 M 20x1,5 WD	37	19	14	27	27	25,9	400
52646	16	M22X1,5	GE 16 PSM 22x1,5 ED	AS 16 M 22x1,5 WD	37	18,5	14	27	30	27	
50300	20	M27X2	GE 20 PSM 27x2 ED	AS 20 M 27x2 WD	42	20,5	16	32	36	32	
50301	25	M33X2	GE 25 PSM 33x2 ED	AS 25 M 33x2 WD	47	23	18	41	46	39,9	
50302	30	M42X2	GE 30 PSM 42x2 ED	AS 30 M 42x2 WD	50	23,5	20	50	50	49,9	
50303	38	M48X2	GE 38 PSM 48x2 ED	AS 38 M 48x2 WD	57	26	22	55	60	55	315

Die tatsächlichen Längenmaße können variieren.

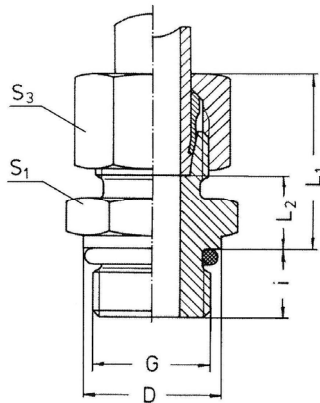


GERADE EINSCHRAUBVERSCHRAUBUNGEN

Einschraubgewinde G
Whitworth-Rohrgewinde, zylindrisch
Einschraubzapfen mit Weichdichtung

Art.Nr.	Rohr AD	G	Artikelbeschreibung		L ₁	L ₂	i	S ₁	S ₃	D	PN
50304	6	G1/8A	GE 06 PLR 1/8 ED	AL 06 R 1/8" WD	23	8,5	8	14	14	14	400
50305	8	G1/4A	GE 08 PLR 1/4 ED	AL 08 R 1/4" WD	25	10	12	19	17	18,9	
50306	10	G1/4A	GE 10 PLR 1/4 ED	AL 10 R 1/4" WD	26	11	12	19	19	18,9	
50307	12	G3/8A	GE 12 PLR 3/8 ED	AL 12 R 3/8" WD	27	12,5	12	22	22	22	
50441	15	G1/2A	GE 15 PLR 3/8 ED	AL 15 R 1/2" WD	29	14	14	27	27	26,9	315
50309	18	G1/2A	GE 18 PLR 1/2 ED	AL 18 R 1/2" WD	31	14,5	14	27	32	26,9	
50310	22	G3/4A	GE 22 PLR 3/4 ED	AL 22 R 3/4" WD	33	16,5	16	32	36	32	250
50311	28	G1A	GE 28 PLR 1 ED	AL 28 R 1" WD	34	17,5	18	41	41	39,9	
50312	35	G1 1/4A	GE 35 PLR 1 1/4 ED	AL 35 R 1 1/4" WD	39	17,5	20	50	50	49,9	630
50313	42	G1 1/2A	GE 42 PLR 1 1/2 ED	AL 42 R 1 1/2" WD	42	19	22	55	60	55	
50314	6	G1/4A	GE 06 PSR 1/4 ED	AS 06 R 1/4" WD	28	13	12	19	17	18,9	400
50315	8	G1/4A	GE 08 PSR 1/4 ED	AS 08 R 1/4" WD	30	15	12	19	19	18,9	
50316	10	G3/8A	GE 10 PSR 3/8 ED	AS 10 R 3/8" WD	31	15	12	22	22	22	
50317	12	G3/8A	GE 12 PSR 3/8 ED	AS 12 R 3/8" WD	33	17	12	22	24	22	
50318	14	G1/2A	GE 14 PSR 1/2 ED	AS 14 R 1/2" WD	37	19	14	27	27	26,9	315
50319	16	G1/2A	GE 16 PSR 1/2 ED	AS 16 R 1/2" WD	37	18,5	14	27	30	26,9	
50320	20	G3/4A	GE 20 PSR 3/4 ED	AS 20 R 3/4" WD	42	20,5	16	32	36	32	400
50321	25	G1A	GE 25 PSR 1 ED	AS 25 R 1" WD	47	23	18	41	46	39,9	
50322	30	G1 1/4A	GE 30 PSR 1 1/4 ED	AS 30 R 1 1/4" WD	50	23,5	20	50	50	49,9	315
50323	38	G1 1/2A	GE 38 PSR 1 1/2 ED	AS 38 R 1 1/2" WD	57	26	22	65	60	55	

Die tatsächlichen Längenmaße können variieren.

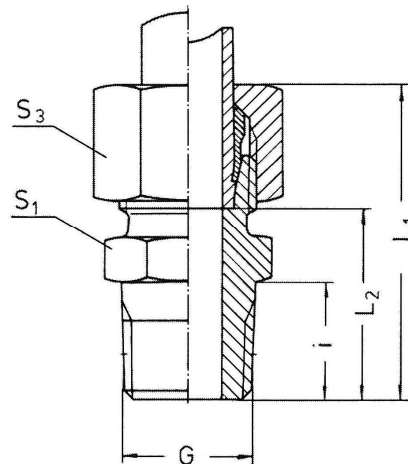


GERADE EINSCHRAUBVERSCHRAUBUNGEN

Einschraubgewinde G; UN, UNF;
Einschraubzapfen mit O-Ring-Abdichtung

Art.Nr.	Rohr AD	G	Artikelbeschreibung		L ₁	L ₂	i	S ₁	S ₃	D	PN
50324	6	7/16-20UNF	GE 06 PL 7/16-20 UNF	AL 06 7/16"-20 UNF	23	8,5	9	17	14	16	400
50325	6	9/16-18UNF	GE 06 PL 9/16-18 UNF	AL 06 9/19"-18 UNF	25	10	10	19	14	17,6	
50326	8	7/16-20UNF	GE 08 PL 7/16-20 UNF	AL 08 7/16"-20 UNF	25	10	9	17	17	16	
50327	8	1/2-20UNF	GE 08 PL 1/2-20 UNF	AL 08 1/2"-20 UNF	25	10	9	17	17	17	
50328	10	7/16-20UNF	GE 10 PL 7/16-20 UNF	AL 10 7/16"-20 UNF	26	11	9	17	19	16	
50329	10	9/16-18UNF	GE 10 PL 9/16-18 UNF	AL 10 9/16"-18 UNF	26	11	10	19	19	17,6	
50330	12	9/16-18UNF	GE 12 PL 9/16-18 UNF	AL 12 9/16"-18 UNF	26	11	10	19	22	17,6	
50331	12	3/4-16UNF	GE 12 PL 3/4-16 UNF	AL 12 3/4"-16 UNF	28	13	11	24	22	22,3	
50332	12	7/8-14UNF	GE 12 PL 7/8-14 UNF	AL 12 7/8"-14 UNF	29	14,3	12,7	27	22	25,5	
50333	15	3/4-16UNF	GE 15 PL 3/4-16 UNF	AL 15 3/4"-16 UNF	29	14	11	24	27	22,3	
50334	18	3/4-16UNF	GE 18 PL 3/4-16 UNF	AL 18 3/4"-16 UNF	31	14,5	11	27	32	22,3	
50335	18	7/8-14UNF	GE 18 PL 7/8-14 UNF	AL 18 7/8"-14 UNF	31	14,8	12,7	27	32	25,5	
50336	22	7/8-14UNF	GE 22 PL 7/8-14 UNF	AL 22 7/8"-14 UNF	33	16,8	12,7	32	36	25,5	
50337	22	1 1/16-12UN	GE 22 PL 1 1/16 12 UN	AL 22 1 1/16"-12 UN	33	16,5	15	32	36	31,9	
50338	22	1 5/16-12UN	GE 22 PL 1 5/16 12 UN	AL 22 1 5/16"-12 UN	34	17,5	15	41	36	38,2	
50339	28	1 1/16-12UN	GE 28 PL 1 1/16 12 UN	AL 28 1 1/16"-12 UN	34	17,5	15	41	41	31,9	
50340	28	1 5/16-12UN	GE 28 PL 1 5/16 12 UN	AL 28 1 5/16"-12 UN	34	17,5	15	41	41	38,2	
50341	35	1 5/16-12UN	GE 35 PL 1 5/16 12 UN	AL 35 1 5/16"-12 UN	39	17,5	15	46	50	38,2	
50342	35	1 5/8-12UN	GE 35 PL 1 5/8-12 UN	AL 35 1 5/8"-12 UN	39	17,5	15	50	50	48	
50343	42	1 5/8-12UN	GE 42 PL 1 5/8-12 UN	AL 42 1 5/8"-12 UN	42	19	15	55	60	48	
50344	42	1 7/8-12UN	GE 42 PL 1 7/8-12 UN	AL 42 1 7/8"-12 UN	42	19	15	55	60	55	
50345	6	7/16-20UNF	GE 06 PS 7/16-20 UNF	AS 06 7/16"-20 UNF	30	15	9	17	17	16	
50346	8	7/16-20UNF	GE 08 PS 7/16-20 UNF	AS 08 7/16"-20 UNF	30	15	9	17	19	16	
50347	8	1/2-20UNF	GE 08 PS 1/2-20 UNF	AS 08 1/2"-20 UNF	30	15	9	17	19	17	
50348	10	9/16-18UNF	GE 10 PS 9/16-18 UNF	AS 10 9/16"-18 UNF	31	14,5	10	19	22	17,6	
50349	12	9/16-18UNF	GE 12 PS 9/16-18 UNF	AS 12 9/16"-18 UNF	31	14,5	10	22	24	17,6	
50350	12	3/4-16UNF	GE 12 PS 3/4-16 UNF	AS 12 3/4"-16 UNF	34	17,5	11	24	24	22,3	
50351	14	3/4-16UNF	GE 14 PS 3/4-16 UNF	AS 14 3/4"-16 UNF	34	16	11	24	27	22,3	
50352	16	3/4-16UNF	GE 16 PS 3/4-16 UNF	AS 16 3/4"-16 UNF	34	15,5	11	24	30	22,3	
50353	16	7/8-14UNF	GE 16 PS 7/8-14 UNF	AS 16 7/8"-14 UNF	37	18,8	12,7	27	30	25,5	
50354	20	3/4-16UNF	GE 20 PS 3/4-16 UNF	AS 20 3/4"-16 UNF	42	20,5	11	32	36	22,3	
50355	20	7/8-14UNF	GE 20 PS 7/8-14 UNF	AS 20 7/8"-14 UNF	42	20,8	12,7	32	36	25,5	
50356	20	1 1/16-12UN	GE 20 PS 1 1/16-12 UN	AS 20 1 1/16"-12 UN	42	20,5	15	32	36	31,9	
50357	25	1 1/16-12UN	GE 25 PS 1 1/16-12 UN	AS 25 1 1/16"-12 UN	47	23	15	36	46	31,9	
50358	25	1 5/16-12UN	GE 25 PS 1 5/16-12 UN	AS 25 1 5/16"-12 UN	47	23	15	41	46	38,2	
50359	30	1 5/16-12UN	GE 30 PS 1 5/16-12 UN	AS 30 1 5/16"-12 UN	50	23,5	15	46	50	38,2	
50360	30	1 5/8-12UN	GE 30 PS 1 5/8-12 UN	AS 30 1 5/8"-12 UN	50	23,5	15	50	50	48	
50361	38	1 5/8-12UN	GE 38 PS 1 5/8-12 UN	AS 38 1 5/8"-12 UN	57	26	15	55	60	48	
50362	38	1 7/8-12UN	GE 38 PS 1 7/8-12 UN	AS 38 1 7/8"-12 UN	57	26	15	55	60	55	

Die tatsächlichen Längenmaße können variieren.

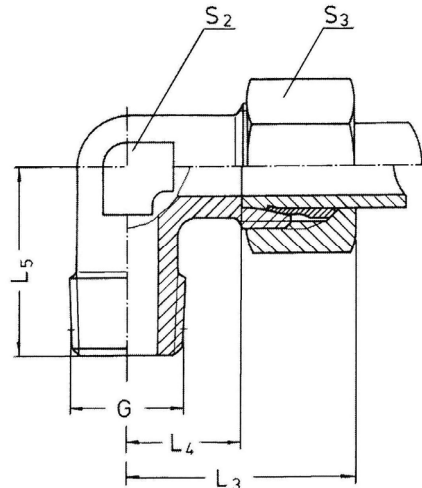


GERADE EINSCHRAUBVERSCHRAUBUNGEN

Einschraubgewinde G
NPT (USAS B 2.1 – 1968)

Art.Nr.	Rohr AD	G	Artikelbeschreibung		L ₁	L ₂	i	S ₁	S ₃	AD	PN
50448	4	1/8NPT	GE 04 LL 1/8 NPT	AKLL 04 1/8" NPT	28	18	9,97	11	10	4	100
50449	5	1/8NPT	GE 05 LL 1/8 NPT	AKLL 05 1/8" NPT	28	16,5	9,97	11	12	5	
50450	6	1/8NPT	GE 06 LL 1/8 NPT	AKLL 06 1/8" NPT	28	16,5	9,97	11	12	6	
50451	8	1/8NPT	GE 08 LL 1/8 NPT	AKLL 08 1/8" NPT	30	18,5	9,97	12	14	8	
50452	6	1/8NPT	GE 06 L 1/8 NPT	AKL 06 1/8" NPT	32	17	9,97	12	14	6	315
50454	8	1/4NPT	GE 08 L 1/4 NPT	AKL 08 1/4" NPT	38	23	15,1	17	17	8	
50455	10	1/4NPT	GE 10 L 1/4 NPT	AKL 10 1/4" NPT	39	24	15,1	17	19	10	
50456	12	3/8NPT	GE 12 L 3/8 NPT	AKL 12 3/8" NPT	40	25	15,26	19	22	12	
52627	15	1/2NPT	GE 15 L 3/4 NPT	AKL 15 3/4" NPT	46	31	19,85	24	27	15	
50458	18	1/2NPT	GE 18 L 1/2 NPT	AKL 18 1/2" NPT	48	31,5	19,85	27	32	18	160
50459	22	3/4NPT	GE 22 L 3/4 NPT	AKL 22 3/4" NPT	50	33,5	20,16	32	36	22	
50460	28	1NPT	GE 28 L 1 NPT	AKL 28 1" NPT	56	39,5	25	41	41	28	
50461	35	1 1/4NPT	GE 35 L 1 1/4 NPT	AKL 35 1 1/4" NPT	62	40,5	25,62	46	50	35	
50462	42	1 1/2NPT	GE 42 L 1 1/2 NPT	AKL 42 1 1/2" NPT	65	42	26,04	55	60	42	630
50463	6	1/4NPT	GE 06 S 1/4 NPT	AKS 06 1/4" NPT	41	26	15,1	17	17	6	
50464	8	1/4NPT	GE 08 S 1/4 NPT	AKS 08 1/4" NPT	43	28	15,1	17	19	8	
50465	10	3/8NPT	GE 10 S 3/8 NPT	AKS 10 3/8" NPT	44	27,5	15,26	19	22	10	
50466	12	3/8NPT	GE 12 S 3/8 NPT	AKS 12 3/8" NPT	46	29,5	15,26	22	24	12	
50467	14	1/2NPT	GE 14 S 1/2 NPT	AKS 14 1/2" NPT	54	36	19,85	24	27	14	400
50468	16	1/2NPT	GE 16 S 1/2 NPT	AKS 16 1/2" NPT	54	35,5	19,85	27	30	16	
50469	20	3/4NPT	GE 20 S 3/4 NPT	AKS 20 3/4" NPT	59	37,5	20,16	32	36	20	
50470	25	1NPT	GE 25 S 1 NPT	AKS 25 1" NPT	69	45	25	41	46	25	
50471	30	1 1/4NPT	GE 30 S 1 1/4 NPT	AKS 30 1 1/4" NPT	73	46,5	25,62	46	50	30	
50472	38	1 1/2NPT	GE 38 S 1 1/2 NPT	AKS 38 1 1/2" NPT	79	49	26,04	55	60	38	

Die tatsächlichen Längenmaße können variieren.

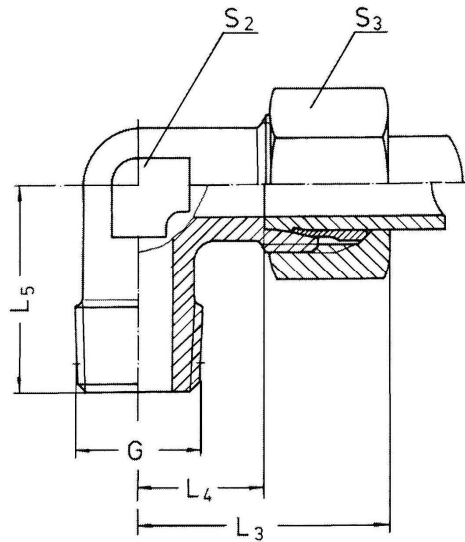


WINKEL EINSCHRAUBVERSCHRAUBUNGEN

Einschraubgewinde G
metrisches Gewinde, kegelig
Einschraubzapfen Form C DIN 3852

Art.Nr.	Rohr AD	G	Artikelbeschreibung		L ₃	L ₄	L ₅	S ₂	S ₃	PN
50473	4	M8x1 K	WE 04 LLM keg 8x1	CKLL 04 M8x1	21	11	17	9	10	100
52600	5	M10x1 K	WE 05 LLM keg 10x1	CKLL 05 M10x1	21	9,5	17	11	12	
50475	6	M10x1 K	WE 06 LLM keg 10x1	CKLL 06 M10x1	21	9,5	17	11	12	
50476	8	M10x1 K	WE 08 LLM keg 10x1	CKLL 08 M10x1	23	11,5	20	12	14	
50479	6	M10x1 K	WE 06 LM keg 10x1	CKL 06 M10x1	27	12	20	12	14	315
50480	8	M12x1,5 K	WE 08 LM keg 12x1,5	CKL 08 M12x1,5	29	14	26	14	17	
50481	10	M14x1,5 K	WE 10 LM keg 14x1,5	CKL 10 M14x1,5	30	15	27	17	19	
50482	12	M16x1,5 K	WE 12 LM keg 16x1,5	CKL 12 M16x1,5	32	17	28	19	22	
50484	15	M18x1,5 K	WE 15 LM keg 18x1,5	CKL 15 M18x1,5	36	21	32	19	27	
50485	18	M22x1,5 K	WE 18 LM keg 22x1,5	CKL 18 M22x1,5	40	23,5	36	24	32	400
50486	6	M12x1,5 K	WE 06 SM keg 12x1,5	CKS 06 M12x1,5	31	16	26	14	17	
50487	8	M14x1,5 K	WE 08 SM keg 14x1,5	CKS 08 M14x1,5	32	17	27	17	19	
50488	10	M16x1,5 K	WE 10 SM keg 16x1,5	CKS 10 M16x1,5	34	17,5	28	19	22	
50489	12	M18x1,5 K	WE 12 SM keg 18x1,5	CKS 12 M18x1,5	38	21,5	28	22	24	
50490	14	M20x1,5 K	WE 14 SM keg 20x1,5	CKS 14 M20x1,5	40	22	32	19	27	
50491	16	M22x1,5 K	WE 16 SM keg 22x1,5	CKS 16 M22x1,5	43	24,5	36	24	30	

Die tatsächlichen Längenmaße können variieren.

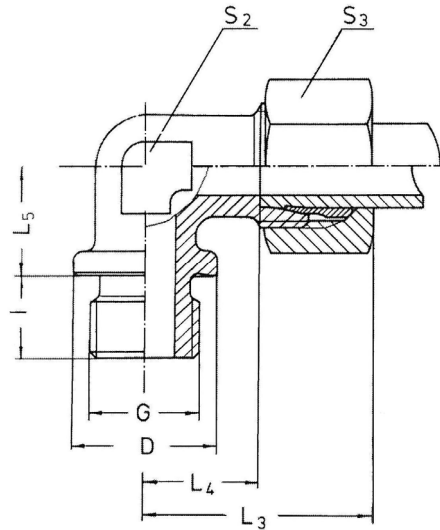


WINKEL EINSCHRAUBVERSCHRAUBUNGEN

Einschraubgewinde G
Whitworth-Rohrgewinde, kegelig
Einschraubzapfen Form C DIN 3852

Art.Nr.	Rohr AD	G	Artikelbeschreibung		L ₃	L ₄	L ₅	S ₂	S ₃	PN
50492	4	R 1/8" K	WE 04 LLR 1/8 keg	CKLL 04 R1/8"	21	11	18	11	10	100
50493	5	R 1/8" K	WE 05 LLR 1/8 keg	CKLL 05 R1/8"	22	10	17	11	12	
50494	6	R 1/8" K	WE 06 LLR 1/8 keg	CKLL 06 R1/8"	22	10	17	11	12	
50495	8	R 1/8" K	WE 08 LLR 1/8 keg	CKLL 08 R1/8"	23	11,5	20	12	14	
50496	10	R 1/4" K	WE 10 LLR 1/4 keg	CKLL 10 R1/4"	27	15,5	26	14	17	
50497	12	R 1/4" K	WE 12 LLR 1/4 keg	CKLL 12 R1/4"	27	15	27	17	19	
50498	6	R 1/8" K	WE 06 PLR 1/8 keg	CKL 06 R1/8"	26	11,5	20	12	14	350
50499	8	R 1/4" K	WE 08 PLR 1/4 keg	CKL 08 R1/4"	29	14	27	14	17	
50500	10	R 1/4" K	WE 10 PLR 1/4 keg	CKL 10 R1/4"	30	15	27	17	19	
50501	12	R 3/8" K	WE 12 PLR 3/8 keg	CKL 12 R3/8"	32	17	28	19	22	
50504	15	R 1/2" K	WE 15 PLR 1/2 keg	CKL 15 R1/2"	36	21	34	19	27	
50505	18	R 1/2" K	WE 18 PLR 1/2 keg	CKL 18 R1/2"	40	23,5	36	24	32	
50506	6	R 1/4" K	WE 06 PSR 1/4 keg	CKS 06 R1/4"	31	16	27	14	17	400
50507	8	R 1/4" K	WE 08 PSR 1/4 keg	CKS 08 R1/4"	32	17	27	17	19	
50508	10	R 3/8" K	WE 10 PSR 3/8 keg	CKS 10 R3/8"	34	17,5	28	19	22	
50509	12	R 3/8" K	WE 12 PSR 3/8 keg	CKS 12 R3/8"	38	21,5	28	22	24	
50510	14	R 1/2" K	WE 14 PSR 1/2 keg	CKS 14 R1/2"	40	22	32	19	27	
50511	16	R 1/2" K	WE 16 PSR 1/2 keg	CKS 16 R1/2"	43	24,5	32	24	30	

Die tatsächlichen Längenmaße können variieren.

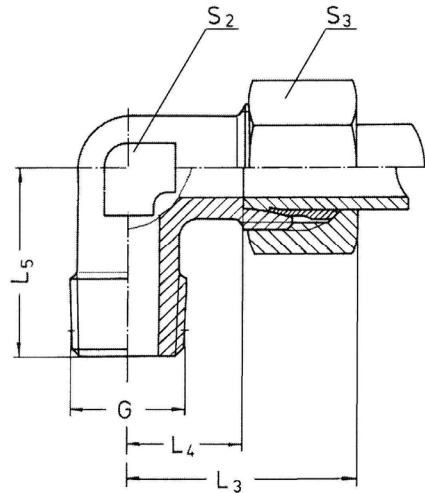


WINKEL EINSCHRAUBVERSCHRAUBUNGEN

Einschraubgewinde G
Metrisches Gewinde, zylindrisch
Whitworth-Rohrgewinde, zylindrisch
Einschraubzapfen Form B DIN 3852

Art.Nr.	Rohr AD	G	Artikelbeschreibung		L ₃	L ₄	L ₅	i	S ₂	S ₃	D	PN
50512	22	M26x1,5	WE 22 PLM M26x1,5	CBL 22 M26x1,5	44	27,5	26	16	27	36	31	250
50513	28	M33x2	WE 28 PLM M33x2	CBL 28 M33x2	47	30,5	30	18	36	41	39	
50514	35	M42x2	WE 35 PLM M42x	CBL 35 M42x2	56	34,5	34	20	41	50	49	
50515	42	M48x2	WE 42 PLM M48x2	CBL 42 M48x2	63	40	39	22	50	60	55	
50516	20	M27x2	WE 20 PSR M27x2	CBS 20 M27x2	8	26,5	26	16	27	36	32	400
50517	25	M33x2	WE 25 PSR M33x2	CBS 25 M33x2	54	30	30	18	36	46	39	
50518	30	M42x2	WE 30 PSR M42x2	CBS 30 M42x2	62	35,5	34	20	41	50	49	250
50519	38	M48x2	WE 38 PSR M48x2	CBS 38 M48x2	72	41	39	22	50	60	55	
50520	22	G 3/4" A	WE 22 PLR G ³ / ₄ A	CBL 22 R3/4"	44	27,5	26	16	27	36	32	250
50521	28	G 1" A	WE 28 PLR G1A	CBL 28 R1"	47	30,5	30	18	36	41	39	
50522	35	G 1 1/4" A	WE 35 PLR G1 1/4A	CBL 35 R1 1/4"	56	34,5	34	20	41	50	49	
50523	42	G 1 1/2" A	WE 42 PLR G1 1/2A	CBL 42 R1 1/2"	63	40	39	22	50	60	55	
50524	20	G 3/4" A	WE 20 PSR G ³ / ₄ A	CBS 20 R3/4"	48	26,5	26	16	27	36	32	400
50525	25	G 1" A	WE 25 PSR G1A	CBS 25 R1"	54	30	30	18	36	46	39	
50526	30	G 1 1/4" A	WE 30 PSR G1 1/4A	CBS 30 R1 1/4"	62	35,5	34	20	41	50	49	250
50527	38	G 1 1/2" A	WE 38 PSR G1 1/2A	CBS 38 R1 1/2"	72	41	39	22	50	60	55	

Die tatsächlichen Längenmaße können variieren.

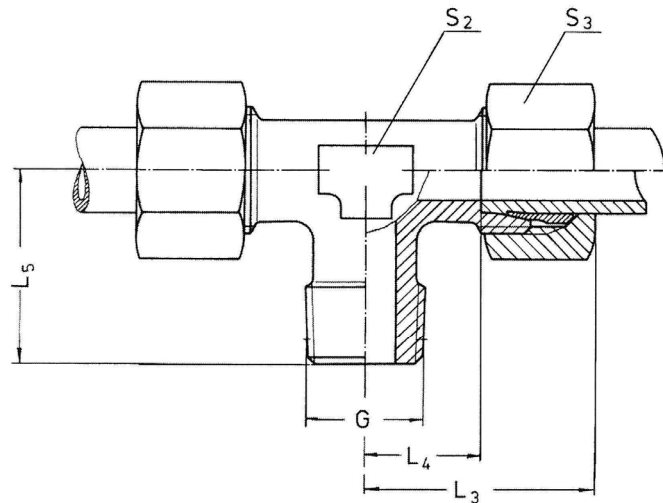


WINKEL EINSCHRAUBVERSCHRAUBUNGEN

Einschraubgewinde G
NPT (USAS B 2.1 - 1968)

Art.Nr.	Rohr AD	G	Artikelbeschreibung		L ₃	L ₄	L ₅	S ₂	S ₃	PN
50528	4	1/8" NPT	WE 04 LL 1/8 NPT	CKLL 04 1/8" NPT	21	11	18	11	10	100
50529	5	1/8" NPT	WE 05 LL 1/8 NPT	CKLL 05 1/8" NPT	21	9,5	17	11	12	
50530	6	1/8" NPT	WE 06 LL 1/8 NPT	CKLL 06 1/8" NPT	21	9,5	17	11	12	
50531	8	1/8" NPT	WE 08 LL 1/8 NPT	CKLL 08 1/8" NPT	23	11,5	20	12	14	
50532	6	1/8" NPT	WE 06 PL 1/8 NPT	CKL 06 1/8" NPT	27	12	20	12	14	315
50533	8	1/4" NPT	WE 08 PL 1/4 NPT	CKL 08 1/4" NPT	29	14	26	14	17	
50534	10	1/4" NPT	WE 10 PL 1/4 NPT	CKL 10 1/4" NPT	30	15	27	17	19	
50535	12	3/8" NPT	WE 12 PL 3/8 NPT	CKL 12 3/8" NPT	32	17	28	19	22	
50536	15	1/2" NPT	WE 15 PL 1/2 NPT	CKL 15 1/2" NPT	36	21	34	19	27	
50537	18	1/2" NPT	WE 18 PL 1/2 NPT	CKL 18 1/2" NPT	40	23,5	36	24	32	
50538	22	3/4" NPT	WE 22 PL 3/4 NPT	CKL 22 3/4" NPT	44	27,5	42	27	36	160
50539	28	1" NPT	WE 28 PL 1 NPT	CKL 28 1" NPT	47	30,5	48	36	41	
50540	35	1 1/4" NPT	WE 35 PL 1 1/4 NPT	CKL 35 1 1/4" NPT	56	34,5	54	41	50	
50541	42	1 1/2" NPT	WE 42 PL 1 1/2 NPT	CKL 42 1 1/2" NPT	62	39	61	50	60	630
50542	6	1/4" NPT	WE 06 PS 1/4 NPT	CKS 06 1/4" NPT	31	16	26	14	17	
50543	8	1/4" NPT	WE 08 PS 1/4 NPT	CKS 08 1/4" NPT	32	17	27	17	19	
50544	10	3/8" NPT	WE 10 PS 3/8 NPT	CKS 10 3/8" NPT	34	17,5	28	19	22	
50545	12	3/8" NPT	WE 12 PS 3/8 NPT	CKS 12 3/8" NPT	38	21,5	28	22	24	
50546	14	1/2" NPT	WE 14 PS 1/2 NPT	CKS 14 1/2" NPT	40	22	34	19	27	
50547	16	1/2" NPT	WE 16 PS 1/2 NPT	CKS 16 1/2" NPT	43	24,5	36	24	30	
50548	20	3/4" NPT	WE 20 PS 3/4 NPT	CKS 20 3/4" NPT	48	26,5	42	27	36	400
50549	25	1" NPT	WE 25 PS 1 NPT	CKS 25 1" NPT	54	30	48	36	46	
50550	30	1 1/4" NPT	WE 30 PS 1 1/4 NPT	CKS 30 1 1/4" NPT	62	35,5	54	41	50	
50551	38	1 1/2" NPT	WE 38 PS 1 1/2 NPT	CKS 38 1 1/2" NPT	72	41	61	50	60	315

Die tatsächlichen Längenmaße können variieren.



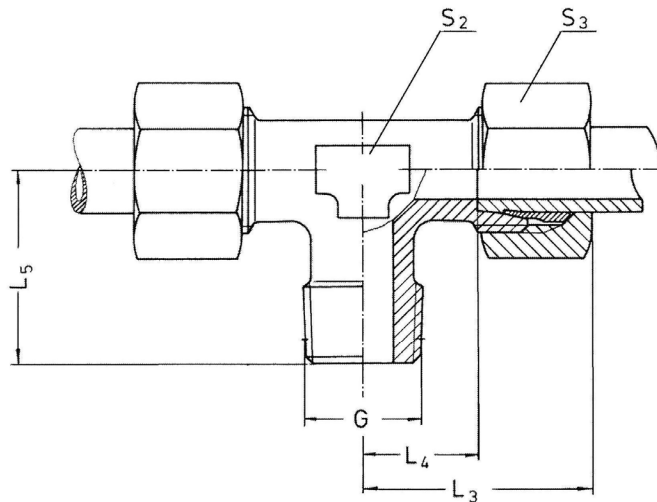
T-

EINSCHRAUBVERSCHRAUBUNGEN

Einschraubgewinde G
Metrisches Gewinde, kegelig
Einschraubzapfen Form C DIN 3852

Art.Nr.	Rohr AD	G	Artikelbeschreibung		L ₃	L ₄	L ₅	S ₂	S ₃	PN
50552	4	M8x1 K	TE 04 LLM 8x1	FKLL 04 M8x1	21	11	17	9	10	100
50553	5	M8x1 K	TE 05 LLM 8x1	FKLL 05 M8x1	21	9,5	17	11	12	
50555	8	M10x1 K	TE 08 LLM 10x1	FKLL 08 M10x1	23	11,5	20	12	14	
50558	6	M10x1 K	TE 06 LM 10x1	FKL 06 M10x1	27	12	20	12	14	315
50559	8	M12x1,5 K	TE 08 LM 12x1,5	FKL 08 M12x1,5	29	14	26	14	17	
50560	10	M14x1,5 K	TE 10 LM 14x1,5	FKL 10 M14x1,5	30	15	27	17	19	
50561	12	M16x1,5 K	TE 12 LM 16x1,5	FKL 12 M16x1,5	32	17	28	19	22	
50562	15	M18x1,5 K	TE 15 LM 18x1,5	FKL 15 M18x1,5	36	21	32	19	27	
50563	18	M22x1,5 K	TE 18 LM 22x1,5	FKL 18 M22x1,5	40	23,5	36	24	32	400
50564	6	M12x1,5 K	TE 06 PSM 12x1,5	FKS 06 M12x1,5	31	16	26	14	17	
50565	8	M14x1,5 K	TE 08 PSM 14x1,5	FKS 08 M14x1,5	32	17	27	17	19	
50566	10	M16x1,5 K	TE 10 PSM 16x1,5	FKS 10 M16x1,5	35	17,5	28	19	22	
50567	12	M18x1,5 K	TE 12 PSM 18x1,5	FKS 12 M18x1,5	38	21,5	28	22	24	
50568	14	M20x1,5 K	TE 14 PSM 20x1,5	FKS 14 M20x1,5	40	22	32	19	27	
50569	16	M22x1,5 K	TE 16 PSM 22x1,5	FKS 16 M22x1,5	43	24,5	32	24	30	

Die tatsächlichen Längenmaße können variieren.

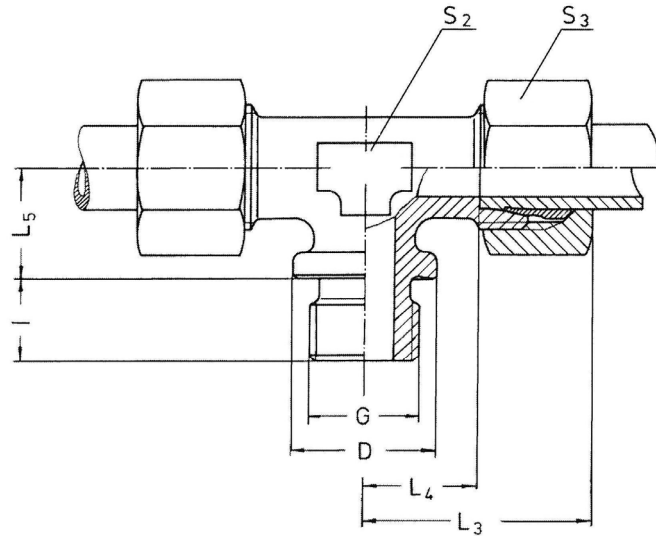


T-EINSCHRAUBVERSCHRAUBUNGEN

Einschraubgewinde G
Whitworth-Rohrgewinde, kegelig
Einschraubzapfen Form C DIN 3852

Art.Nr.	Rohr AD	G	Artikelbeschreibung		L ₃	L ₄	L ₅	S ₂	S ₃	PN
50570	4	R 1/8" K	TE 04 LLR	FKLL 04 R1/8"	21	11	17	11	10	100
50571	5	R 1/8" K	TE 05 LLR	FKLL 05 R1/8"	21	9,5	17	11	12	
50572	6	R 1/8" K	TE 06 LLR	FKLL 06 R1/8"	21	9,5	17	11	12	
50573	8	R 1/8" K	TE 08 LLR	FKLL 08 R1/8"	23	11,5	20	12	14	
50574	10	R 1/4" K	TE 10 LLR	FKLL 10 R1/4"	27	15,5	26	14	17	
50575	12	R 1/4" K	TE 12 LLR	FKLL 12 R1/4"	27	15	27	17	19	
50576	6	R 1/8" K	TE 06 PLR	FKL 06 R1/8"	27	12	20	12	14	315
50577	8	R 1/4" K	TE 08 PLR	FKL 08 R1/4"	29	14	26	14	17	
50578	10	R 1/4" K	TE 10 PLR	FKL 10 R1/4"	30	15	27	17	19	
52577	12	R 3/8" K	TE 12 PLR	FKL 12 R3/8"	32	17	28	19	22	
52578	15	R 1/2" K	TE 15 PLR	FKL 15 R1/2"	36	21	34	19	27	
50581	18	R 1/2" K	TE 18 PLR	FKL 18 R1/2"	40	23,5	36	24	32	
50582	6	R 1/4" K	TE 06 PSR	FKS 06 R1/4"	31	16	26	14	17	400
50583	8	R 1/4" K	TE 08 PSR	FKS 08 R1/4"	32	17	27	17	19	
50584	10	R 3/8" K	TE 10 PSR	FKS 10 R3/8"	34	17,5	28	19	22	
50585	12	R 3/8" K	TE 12 PSR	FKS 12 R3/8"	38	21,5	28	22	24	
50586	14	R 1/2" K	TE 14 PSR	FKS 14 R1/2"	40	22	32	19	27	
50587	16	R 1/2" K	TE 16 PSR	FKS 16 R1/2"	43	24,5	32	24	30	

Die tatsächlichen Längenmaße können variieren.

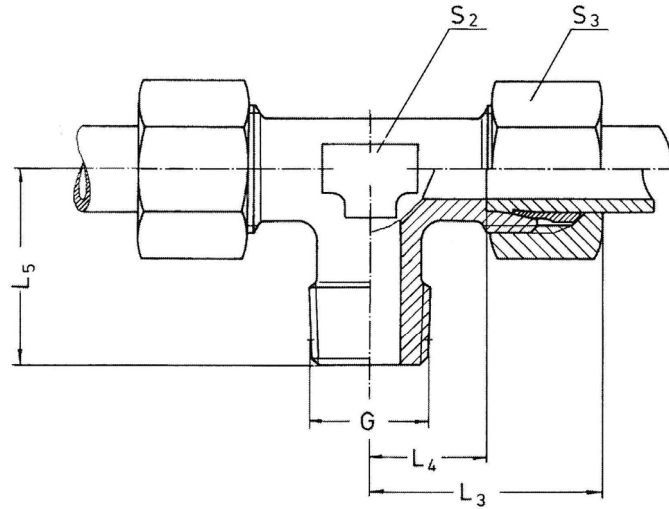


T-EINSCHRAUBVERSCHRAUBUNGEN

Einschraubgewinde G
Metrisches Gewinde, zylindrisch
Whitworth-Rohrgewinde, zylindrisch
Einschraubzapfen Form B DIN 3852

Art.Nr.	Rohr AD	G	Artikelbeschreibung		L ₃	L ₄	L ₅	i	S ₂	S ₃	D	PN
50588	22	M26x1,5	TE 22 PLM 26x1,5	FBL 22 M26x1,5	44	27,5	26	16	27	36	31	250
50589	28	M33x2	TE 28 PLM 33x2	FBL 28 M33x2	47	30,5	30	18	36	41	39	
50590	35	M42x2	TE 35 PLM 42x2	FBL 35 M42x2	56	34,5	34	20	41	50	49	
50591	42	M48x2	TE 42 PLM 48x2	FBL 42 M48x2	63	40	39	22	50	60	55	
50592	20	M27x2	TE 22 PLM 27x2	FBS 20 M27x2	48	26,5	26	16	27	36	32	400
50593	25	M33x2	TE 25 PLM 33x2	FBS 25 M33x2	54	30	30	18	36	46	39	
50594	30	M42x2	TE 30 PLM 42x2	FBS 30 M42x2	62	35,5	34	20	41	50	49	250
50595	38	M48x2	TE 38 PLM 48x2	FBS 38 M48x2	72	41	39	22	50	60	55	
50596	22	G 3/4" A	TE 22 PLR	FBL 22 R3/4"	44	27,5	26	16	27	36	32	250
50597	28	G 1" A	TE 28 PLR	FBL 28 R1"	47	30,5	30	18	36	41	39	
50598	35	G 1 1/4" A	TE 35 PLR	FBL 35 R1 1/4"	55	33	34	20	41	50	49	
50599	42	G 1 1/2" A	TE 42 PLR	FBL 42 R1 1/2"	63	40	39	22	50	60	55	
50600	20	G 3/4" A	TE 20 PSR	FBS 20 R3/4"	48	26,5	26	16	27	36	32	400
50601	25	G 1" A	TE 25 PSR	FBS 25 R1"	54	30	30	18	36	46	39	
50602	30	G 1 1/4" A	TE 30 PSR	FBS 30 R1"	62	35,5	34	20	41	50	49	250
50603	38	G 1 1/2" A	TE 38 PSR	FBS 38 R1 1/2"	72	41	39	22	50	60	55	

Die tatsächlichen Längenmaße können variieren.

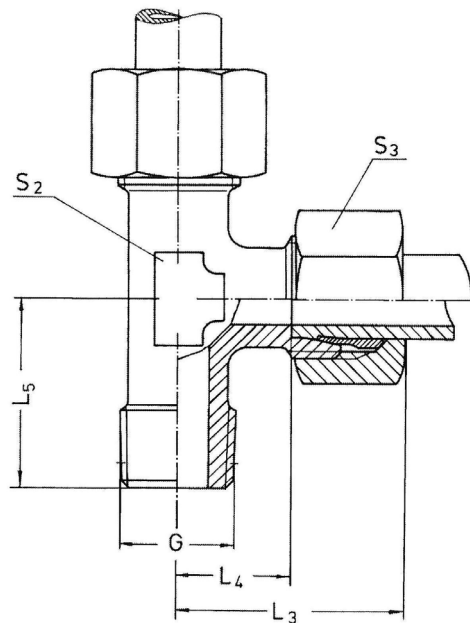


T EINSCHRAUBVERSCHRAUBUNGEN

Einschraubgewinde G
NPT (USAS B 2.1 - 1968)

Art.Nr.	Rohr AD	G	Artikelbeschreibung		L ₃	L ₄	L ₅	S ₂	S ₃	PN
50604	4	1/8" NPT	TE 04 LL 1/8 NPT	FKLL 04 1/8" NPT	21	11	17	11	10	100
50605	5	1/8" NPT	TE 05 LL 1/8 NPT	FKLL 05 1/8" NPT	21	9,5	17	11	12	
50606	6	1/8" NPT	TE 06 LL 1/8 NPT	FKLL 06 1/8" NPT	21	9,5	17	11	12	
50607	8	1/8" NPT	TE 08 LL 1/8 NPT	FKLL 08 1/8" NPT	23	11,5	20	12	14	
50608	6	1/8" NPT	TE 06 PL 1/8 NPT	FKL 06 1/8" NPT	27	12	20	12	14	315
50609	8	1/4" NT	TE 08 PL 1/4 NPT	FKL 08 1/4" NPT	29	14	26	14	17	
50610	10	1/4" NT	TE 10 PL 1/4 NPT	FKL 10 1/4" NPT	30	15	27	17	19	
50611	12	3/8" NPT	TE 12 PL 3/8 NPT	FKL 12 3/8" NPT	32	17	28	19	22	
50612	15	1/2" NPT	TE 15 PL 1/2 NPT	FKL 15 1/2" NPT	36	21	34	19	27	160
50613	18	1/2" NPT	TE 18 PL 1/2 NPT	FKL 18 1/2" NPT	40	23,5	36	24	32	
50614	22	3/4" NPT	TE 22 PL 3/4 NPT	FKL 22 3/4" NPT	44	27,5	42	27	36	
50615	28	1" NPT	TE 28 PL 1 NPT	FKL 28 1" NPT	47	30,5	48	36	41	
50616	35	1 1/4" NPT	TE 35 PL 1 1/4 NPT	FKL 35 1 1/4" NPT	56	34,5	54	41	50	630
50617	42	1 1/2" NPT	TE 42 PL 1 1/2 NPT	FKL 42 1 1/2" NPT	63	40	61	50	60	
50618	6	1/4" NPT	TE 06 PS 1/4 NPT	FKS 06 1/4" NPT	31	16	26	14	17	
50619	8	1/4" NPT	TE 08 PS 1/4 NPT	FKS 08 1/4" NPT	32	17	27	17	19	
50620	10	3/8" NPT	TE 10 PS 3/8 NPT	FKS 10 3/8" NPT	34	17,5	28	19	22	400
50621	12	3/8" NPT	TE 12 PS 3/8 NPT	FKS 12 3/8" NPT	38	21,5	28	22	24	
50622	14	1/2" NPT	TE 14 PS 1/2 NPT	FKS 14 1/2" NPT	40	22	34	19	27	
50623	16	1/2" NPT	TE 16 PS 1/2 NPT	FKS 16 1/2" NPT	43	24,5	36	24	30	
50624	20	3/4" NPT	TE 20 PS 3/4 NPT	FKS 20 3/4" NPT	48	26,5	42	27	36	315
50625	25	1" NPT	TE 25 PS 1 NPT	FKS 25 1" NPT	54	30	48	36	46	
50626	30	1 1/4" NPT	TE 30 PS 1 1/4 NPT	FKS 30 1 1/4" NPT	62	35,5	54	41	50	
50627	38	1 1/2" NPT	TE 38 PS 1 1/2 NPT	FKS 38 1 1/2" NPT	72	41	61	50	60	

Die tatsächlichen Längenmaße können variieren.

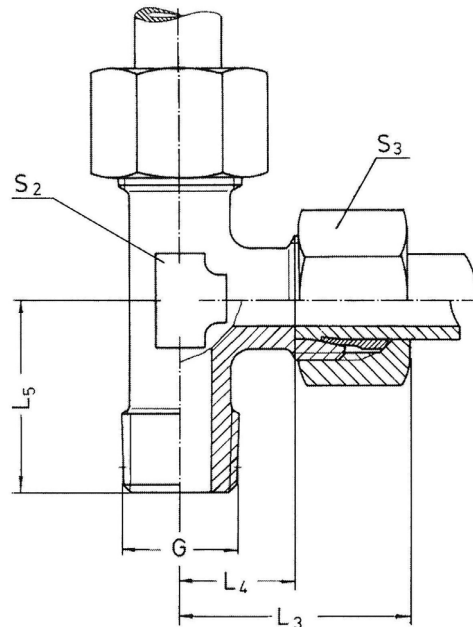


L EINSCHRAUBVERSCHRAUBUNGEN

Einschraubgewinde G
Metrisches Gewinde, kegelig
Einschraubzapfen Form C DIN 3852

Art.Nr.	Rohr AD	G	Artikelbeschreibung		L ₃	L ₄	L ₅	S ₂	S ₃	PN
50628	4	M8x1 K	LE 04 LLM 8x1 keg	LKLL 04 M8x1	21	11	17	9	10	100
50629	5	M8x1 K	LE 05 LLM 8x1 keg	LKLL 05 M8x1	21	9,5	17	11	12	
50630	6	M10x1 K	LE 06 LLM 10x1 keg	LKLL 06 M10x1	21	9,5	17	11	12	
50631	8	M10x1 K	LE 08 LLM 10x1 keg	LKLL 08 M10x1	23	11,5	20	12	14	
50632	6	M10x1 K	LE 06 PLM 10x1 keg	LKL 06 M10x1	27	12	20	12	14	315
50633	8	M12x1,5 K	LE 08 PLM 12x1,5 keg	LKL 08 M12x1,5	29	14	26	14	17	
50634	10	M14x1,5 K	LE 10 PLM 14x1,5 keg	LKL 10 M14x1,5	30	15	27	17	19	
50635	12	M16x1,5 K	LE 12 PLM 16x1,5 keg	LKL 12 M16x1,5	32	17	28	19	22	
50636	15	M18x1,5 K	LE 15 PLM 18x1,5 keg	LKL 15 M18x1,5	36	21	32	19	27	
50637	18	M22x1,5 K	LE 18 PLM 22x1,5 keg	LKL 18 M22x1,5	40	23,5	36	24	32	400
50638	6	M12x1,5 K	LE 06 PSM 12x1,5 keg	LKS 06 M12x1,5	31	16	26	14	17	
50639	8	M14x1,5 K	LE 08 PSM 14x1,5 keg	LKS 08 M14x1,5	32	17	27	17	19	
50640	10	M16x1,5 K	LE 10 PSM 16x1,5 keg	LKS 10 M16x1,5	34	17,5	28	19	22	
50641	12	M18x1,5 K	LE 12 PSM 18x1,5 keg	LKS 12 M18x1,5	38	21,5	28	22	24	
50642	14	M20x1,5 K	LE 14 PSM 20x1,5 keg	LKS 14 M20x1,5	40	22	32	19	27	
50643	16	M22x1,5 K	LE 16 PSM 22x1,5 keg	LKS 16 M22x1,5	43	24,5	32	24	30	

Die tatsächlichen Längenmaße können variieren.

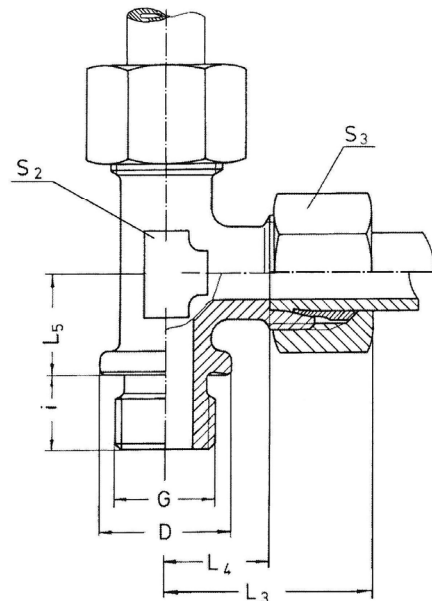


L EINSCHRAUBVERSCHRAUBUNGEN

Einschraubgewinde G
Metrisches Gewinde, kegelig
Einschraubzapfen Form C DIN 3852

Art.Nr.	Rohr AD	G	Artikelbeschreibung		L ₃	L ₄	L ₅	S ₂	S ₃	PN
50644	4	R 1/8" K	LE 04 LLR keg R1/8"	LKLL 04 R1/8"	21	11	17	11	10	100
50645	5	R 1/8" K	LE 05 LLR keg R1/8"	LKLL 05 R1/8"	21	9,5	17	11	12	
50646	6	R 1/8" K	LE 06 LLR keg R1/8"	LKLL 06 R1/8"	21	9,5	17	11	12	
50647	8	R 1/8" K	LE 08 LLR keg R1/8"	LKLL 08 R1/8"	23	11,5	20	12	14	
50648	6	R 1/8" K	LE 06 PLR keg R1/8"	LKL 06 R1/8"	26	12	20	12	14	315
50649	8	R 1/4" K	LE 08 PLR keg R1/4"	LKL 08 R1/4"	29	14	26	14	17	
50650	10	R 1/4" K	LE 10 PLR keg R1/4"	LKL 10 R1/4"	30	15	27	17	19	
50651	12	R 3/8" K	LE 12 PLR keg R3/8"	LKL 12 R3/8"	32	17	28	19	22	
50652	15	R 1/2" K	LE 15 PLR keg R1/2"	LKL 15 R1/2"	36	21	34	19	27	
50653	18	R 1/2" K	LE 18 PLR keg R1/2"	LKL 18 R1/2"	40	23,5	36	24	32	400
50654	6	R 1/4" K	LE 06 PSR keg R1/4"	LKS 06 R1/4"	31	16	26	14	17	
50655	8	R 1/4" K	LE 08 PSR keg R1/4"	LKS 08 R1/4"	32	17	27	17	19	
50656	10	R 3/8" K	LE 10 PSR keg R3/8"	LKS 10 R3/8"	34	17,5	28	19	22	
50657	12	R 3/8" K	LE 12 PSR keg R3/8"	LKS 12 R3/8"	38	21,5	28	22	24	
50658	14	R 1/2" K	LE 14 PSR keg R1/2"	LKS 14 R1/2"	40	22	32	19	27	
50659	16	R 1/2" K	LE 16 PSR keg R1/2"	LKS 16 R1/2"	43	24,5	32	24	30	

Die tatsächlichen Längenmaße können variieren.

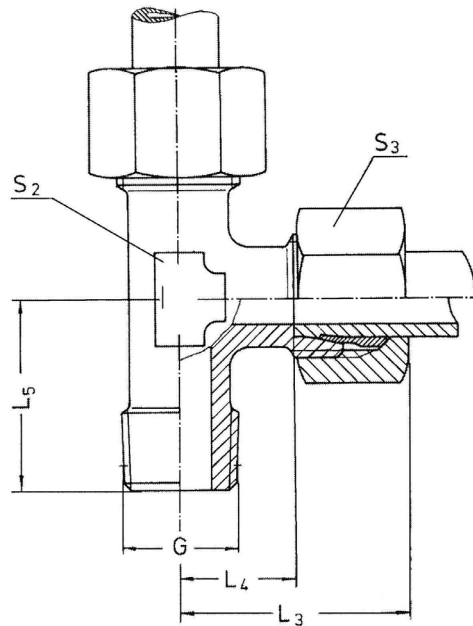


L EINSCHRAUBVERSCHRAUBUNGEN

Einschraubgewinde G
Metrisches Gewinde, zylindrisch
Whitworth-Rohrgewinde, zylindrisch
Einschraubzapfen Form B DIN 3852

Art.Nr.	Rohr AD	G	Artikelbeschreibung		L ₃	L ₄	L ₅	i	S ₂	S ₃	D	PN
50660	22	M26x1,	LE 22 PLM 26x1,5	LBL 22 M26x1,5	43,5	27,5	26	16	27	36	31	250
50661	28	M33x2	LE 28 PLM 33x2	LBL 28 M33x2	47	30,5	30	18	36	41	39	
50662	35	M42x2	LE 35 PLM 42x2	LBL 35 M42x2	56	34,5	34	20	41	50	49	
50663	42	M48x2	LE 42 PLM 48x2	LBL 42 M48x2	62,5	40	39	22	50	60	55	
50664	20	M27x2	LE 22 PLM 27x2	LBS 20 M27x2	48	26,5	26	16	27	36	32	400
50665	25	M33x2	LE 25 PLM 33x2	LBS 25 M33x2	54	30	30	18	36	46	39	
50666	30	M42x2	LE 30 PLM 42x2	LBS 30 M42x2	62	35,5	34	20	41	50	49	250
50667	38	M48x2	LE 38 PLM 48x2	LBS 38 M48x2	71,5	41	39	22	50	60	55	
50668	22	G 3/4" A	LE 22 PLR 3/4"	LBL 22 R3/4"	43,5	27,5	26	16	27	36	32	
50669	28	G 1" A	LE 28 PLR 1"	LBL 28 R1"	47	30,5	30	18	36	41	39	
50670	35	G 1 1/4" A	LE 35 PLR 1 1/4"	LBL 35 R1 1/4"	56	34,5	34	20	41	50	49	400
50671	42	G 1 1/2" A	LE 42 PLR 1 1/2"	LBL 42 R1 1/2"	62,5	40	39	22	50	60	55	
50672	20	G 3/4" A	LE 20 PSR 3/4"	LBS 20 R3/4"	48	26,5	26	16	27	36	32	250
50673	25	G 1" A	LE 25 PSR 1"	LBS 25 R1"	54	30	30	18	36	46	39	
50674	30	G 1 1/4" A	LE 30 PSR 1 1/4"	LBS 30 R1 1/4"	62	35,5	34	20	41	50	49	250
50675	38	G 1 1/2" A	LE 38 PSR 1 1/2"	LBS 38 R1 1/2"	71,5	41	39	22	50	60	55	

Die tatsächlichen Längenmaße können variieren.



L EINSCHRAUBVERSCHRAUBUNGEN

Einschraubgewinde G
NPT (USAS B 2.1 – 1968)

Art.Nr.	Rohr AD	G	Artikelbeschreibung		L ₃	L ₄	L ₅	S ₂	S ₃	PN
50676	4	1/8" NPT	LE 04 LL 1/8 NPT	LKLL 04 1/8" NPT	21	11	17	11	10	100
50677	5	1/8" NPT	LE 05 LL 1/8 NPT	LKLL 05 1/8" NPT	21	9,5	17	11	12	
50678	6	1/8" NPT	LE 06 LL 1/8 NPT	LKLL 06 1/8" NPT	21	9,5	17	11	12	
50679	8	1/8" NPT	LE 08 LL 1/8 NPT	LKLL 08 1/8" NPT	23	11,5	20	12	14	
50680	6	1/8" NPT	LE 06 PL 1/8 NPT	LKL 06 1/8" NPT	27	12	20	12	14	315
50681	8	1/4" NPT	LE 08 PL 1/4 NPT	LKL 08 1/4" NPT	29	14	26	14	17	
50682	10	1/4" NPT	LE 10 PL 1/4 NPT	LKL 10 1/4" NPT	30	15	27	17	19	
50683	12	3/8" NPT	LE 12 PL 3/8 NPT	LKL 12 3/8" NPT	32	17	28	19	22	
50684	15	1/2" NPT	LE 15 PL 1/2 NPT	LKL 15 1/2" NPT	36	21	34	19	27	160
50685	18	1/2" NPT	LE 18 PL 1/2 NPT	LKL 18 1/2" NPT	40	23,5	36	24	32	
50686	22	3/4" NPT	LE 22 PL 3/4 NPT	LKL 22 3/4" NPT	44	27,5	42	27	36	
50687	28	1" NPT	LE 28 PL 1 NPT	LKL 28 1" NPT	47	30,5	48	36	41	
50688	35	1 1/4" NPT	LE 35 PL 1 1/4 NPT	LKL 35 1 1/4" NPT	56	34,5	54	41	50	630
50689	42	1 1/2" NPT	LE 42 PL 1 1/2 NPT	LKL 42 1 1/2" NPT	63	40	61	50	60	
50690	6	1/4" NPT	LE 06 PS 1/4 NPT	LKS 06 1/4" NPT	31	16	26	14	17	
50691	8	1/4" NPT	LE 08 PS 1/4 NPT	LKS 08 1/4" NPT	32	17	27	17	19	
50692	10	3/8" NPT	LE 10 PS 3/8 NPT	LKS 10 3/8" NPT	34	17,5	28	19	22	400
50693	12	3/8" NPT	LE 12 PS 3/8 NPT	LKS 12 3/8" NPT	38	21,5	28	22	24	
50694	14	1/2" NPT	LE 14 PS 1/2 NPT	LKS 14 1/2" NPT	40	22	34	19	27	
50695	16	1/2" NPT	LE 16 PS 1/2 NPT	LKS 16 1/2" NPT	43	24,5	36	24	30	
50696	20	3/4" NPT	LE 20 PS 3/4 NPT	LKS 20 3/4" NPT	48	26,5	42	27	36	315
50697	25	1" NPT	LE 25 PS 1 NPT	LKS 25 1" NPT	54	30	48	36	46	
50698	30	1 1/4" NPT	LE 30 PS 1 1/4 NPT	LKS 30 1 1/4" NPT	62	35,5	54	41	50	
50699	38	1 1/2" NPT	LE 38 PS 1 1/2 NPT	LKS 38 1 1/2" NPT	72	41	61	50	60	

Die tatsächlichen Längenmaße können variieren.